

# myRobot<sup>®</sup> C E N T E R

The expert for robots in your home

With one click to the online shop



[myRobotcenter.eu](https://myRobotcenter.eu)



[myRobotcenter.co.uk](https://myRobotcenter.co.uk)



myRobotcenter



# QUICK START

neato

[Start Here](#) | [Commencez ici](#) | [Comience aquí](#) | [Comincia qui](#) | [Jetzt loslegen](#)





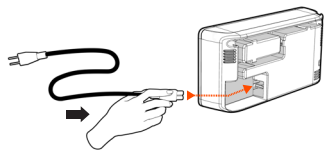
botvac **D7** connected

# Connecting Your Robot

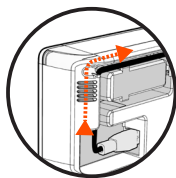
## 1 REMOVE FILMS AND STICKERS

**IMPORTANT:** Remove all protective films and shipping material from the robot and charge base. If they are not removed, your Neato robot will not operate correctly.

## 2 SET UP CHARGE BASE



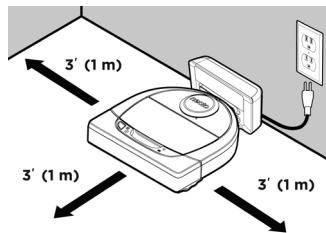
Plug the power cord securely into the charge base.



Adjust the length of the cord by wrapping it as shown.

Choose a wall outlet that has a 3' (1 m) clearance on both sides and in front of the charge base. This helps your robot find the charge base.

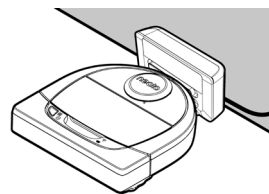
Plug in the power cord and push the charge base against the wall.



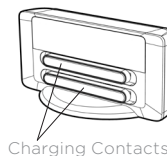
**TIP:** Locate the charge base on a hard floor surface.

**TIP:** Make sure the power outlet is not controlled by a switch.

## 3 INITIAL ROBOT CHARGING




Place the rounded side of your Neato robot against the metal charging contacts on the charge base until the contacts are pushed all of the way in.



For best results, charge the robot fully before your first cleaning cycle to experience a full high performance cleaning.

**NOTE:** During bootup, the robot LEDs next to the Start Button will alternatively blink blue and green.

**NOTE:** Your robot is only compatible with the included charge base.

4 Get your • Smartphone / Tablet   
• 2.4 GHz or 5 GHz Wi-Fi name & password 

5 Download the Neato app



6 Open the Neato app and create a Neato account

7 Click Link in email to verify your email address

8 Follow steps in the Neato app to Add a new robot

## Pairing Issues - Try Again

During pairing the WI-FI LED will change based on connection status:

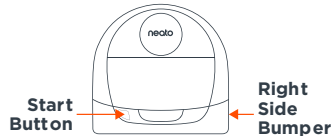
### WI-FI LED

LED COLOR	WHAT IT MEANS
Soft Glowing Blue	Robot is in Pairing Mode
Fast Blinking Blue*	Pairing to Neato app/account
Fast Blinking Red	Error Connecting
Solid Blue	Pairing Successful
No Light	Robot Offline - please connect to access additional features

\*If you've already paired, Fast Blinking Blue means the robot has lost connection. The robot could be out of range, your Wi-Fi network may be down, or another Wi-Fi issue may have occurred. If out of range, the robot will automatically reconnect when it comes back within range. Otherwise, check your router to make sure it's operating normally.

If you don't connect within the first 60 minutes of charging your robot OR if the robot does not connect the first time, please do the following:

- Press and hold the Start Button and Right Bumper for 15 seconds to turn robot off.



- Press the Start Button again to turn robot on. The WI-FI LED is slow blinking blue and robot is in pairing mode.
- Follow steps in the Neato app to Add a new robot.

## Start Using Your Robot



Use the Neato app to start using your robot, or press the Start Button on the robot.

### START BUTTON, HOUSE CLEAN and SPOT CLEAN LEDs

	ACTION	HOUSE CLEAN LED	SPOT CLEAN LED
Start Cleaning	Press Start Button 1x for house cleaning	Solid Blue	
	Press Start Button 2x for spot cleaning		Solid Blue
Pause/Resume Cleaning	Press Start Button during cleaning to pause robot.	Pulses while paused in House Clean	Pulses while paused in Spot Clean
	Press Start Button again to resume cleaning	Solid Blue	Solid Blue
Cancel Cleaning (When Paused)	Press & hold Start Button for 5 seconds to cancel cleaning	Robot & LEDs turn off & robot plays a tone	Robot & LEDs turn off & robot plays a tone

\* NOTE: if LED light is blinking red or solid red, your robot needs robot maintenance or your robot has a navigation issue. Please check the troubleshooting section of this guide.

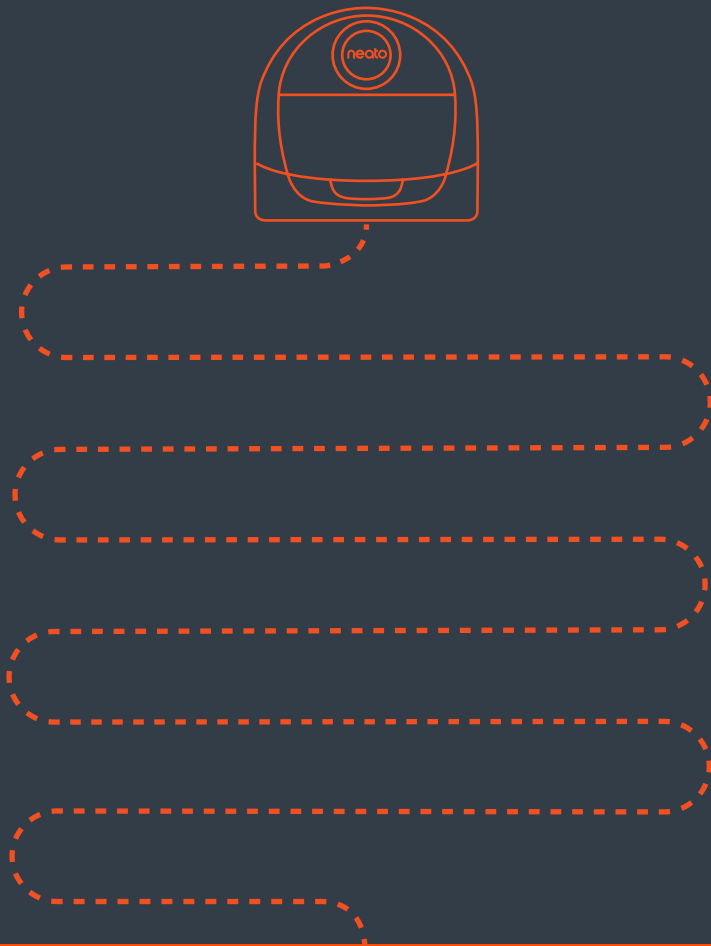
Use Neato FloorPlanner to add "No-Go" Lines.  
See page 9 of the User Guide.

### Need Assistance?

Watch How-To Video here  
[www.NeatoRobotics.com/connect](http://www.NeatoRobotics.com/connect)

Call **1-877-296-3286** or go to  
[www.NeatoRobotics.com/support](http://www.NeatoRobotics.com/support)  
for a contact phone number in your area

Email [CustomerCare@NeatoRobotics.com](mailto:CustomerCare@NeatoRobotics.com)



**Neato Robotics, Inc.**

8100 Jarvis Avenue, Newark, CA 94560 USA

**NeatoRobotics.com**

515-0057 Rev 2